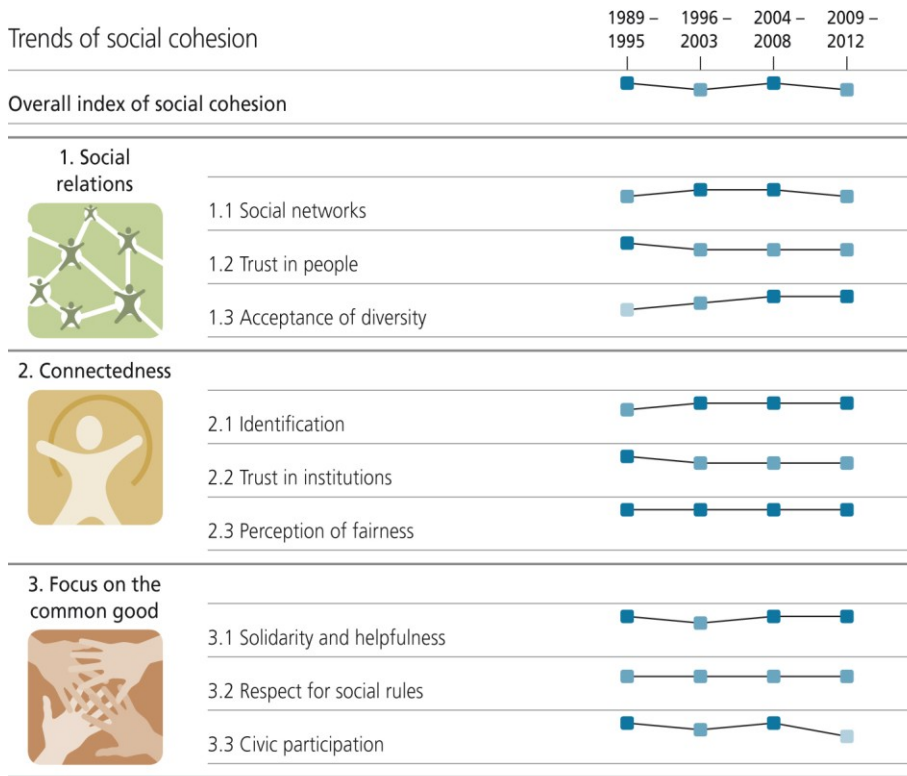


# Canada



## Trends of social cohesion



## COMMENTS

The figure shows trends in social cohesion and its nine dimensions over time. The top row shows the overall index of social cohesion. The rest of the figure shows the partial dimensions, grouped into three domains. The color of the dots indicates the country's position in relation to the other 33 countries: dark blue stands for the top tier, blue for the second tier, light blue for the middle tier, yellow for the fourth tier and orange for the bottom tier.

White dots  indicate that estimated values were used because insufficient data were available for that time period. The relative position of the dots shows which group the country belongs to.

BertelsmannStiftung

**Canada** is in the second tier overall, just under the top tier; at certain times it has also managed to join the top tier. Canada's strengths include acceptance of diversity, identification with the nation, perception of fairness, and solidarity and helpfulness (top tier). Canada ranks only in the middle tier for civic participation.

A positive trend can be seen in the acceptance of diversity, while Canada's comparatively weak scores for civic participation highlight a negative trend. The other dimensions exhibit only weak trends or slight fluctuations.

Canada's profile is similar to those of Australia and New Zealand.

## About the Social Cohesion Radar

Social cohesion is a characteristic of a society. We have calculated cohesion at the country level, based on 58 indicators measuring nine dimensions within the three domains of social relations, connectedness and focus on the common good. The survey covered four survey periods between 1989 and 2012 and included a total of 34 EU and OECD countries. The overall rankings are led by the Scandinavian countries, followed by the English-speaking immigration countries.

Further information is available at:  
[www.social-cohesion.net](http://www.social-cohesion.net)