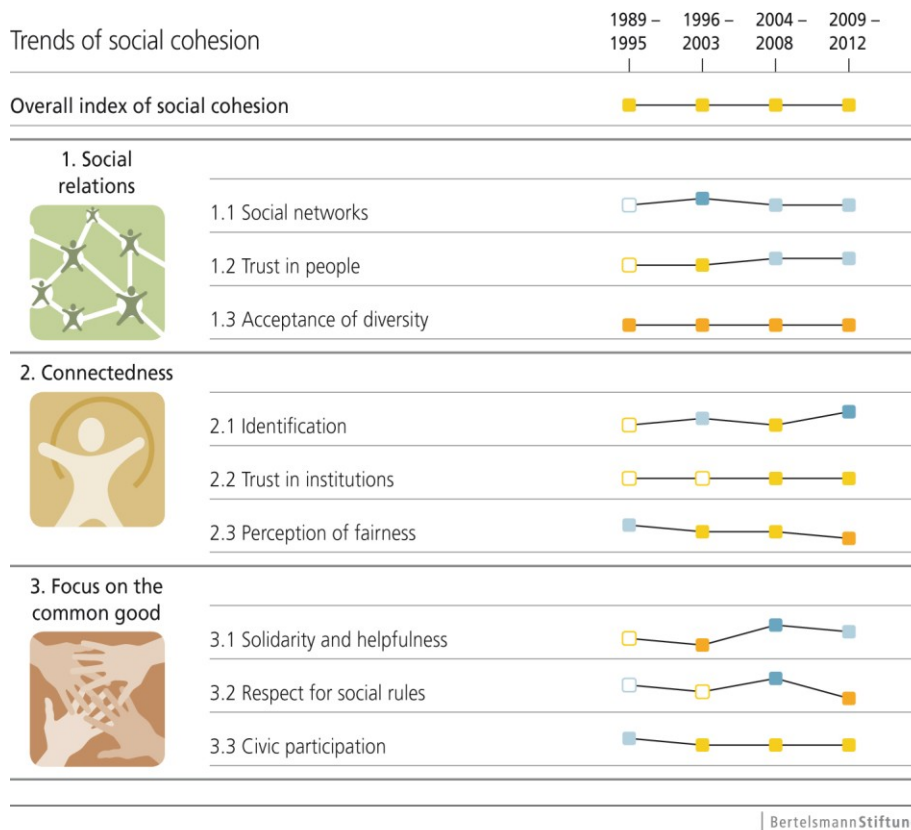


# Israel



## Trends of social cohesion



## COMMENTS

The figure shows trends in social cohesion and its nine dimensions over time. The top row shows the overall index of social cohesion. The rest of the figure shows the partial dimensions, grouped into three domains. The color of the dots indicates the country's position in relation to the other 33 countries: dark blue stands for the top tier, blue for the second tier, light blue for the middle tier, yellow for the fourth tier and orange for the bottom tier.

White dots indicate that estimated values were used because insufficient data were available for that time period. The relative position of the dots shows which group the country belongs to.

**Israel** is in the fourth tier overall. It ranks in the bottom tier for acceptance of diversity, perception of fairness and respect for social rules, but in the middle tier for social networks, trust in other people, and solidarity and helpfulness.

Israel is in the second tier with respect to identification with the nation, and the trend is strongly positive for that dimension, as well as for solidarity and helpfulness. When it comes to perception of fairness and respect for social rules, however, there is a distinct negative trend.

Israel's profile is similar to that of Cyprus, except in the domain of social relations.

## About the Social Cohesion Radar

Social cohesion is a characteristic of a society. We have calculated cohesion at the country level, based on 58 indicators measuring nine dimensions within the three domains of social relations, connectedness and focus on the common good. The survey covered four survey periods between 1989 and 2012 and included a total of 34 EU and OECD countries. The overall rankings are led by the Scandinavian countries, followed by the English-speaking immigration countries.

Further information is available at:  
[www.social-cohesion.net](http://www.social-cohesion.net)