

BertelsmannStiftung

Bertelsmann Stiftung

CPEN**D**ATA
FRANCE

_The OpenDataFrance association

_Open Data in France

_The challenges of data access

_Valuing data

_Local initiatives to open up data

_Collaboration between local authorities and central government

_Successful open data projects and use cases

OpenDataFrance

accompagny

and federates

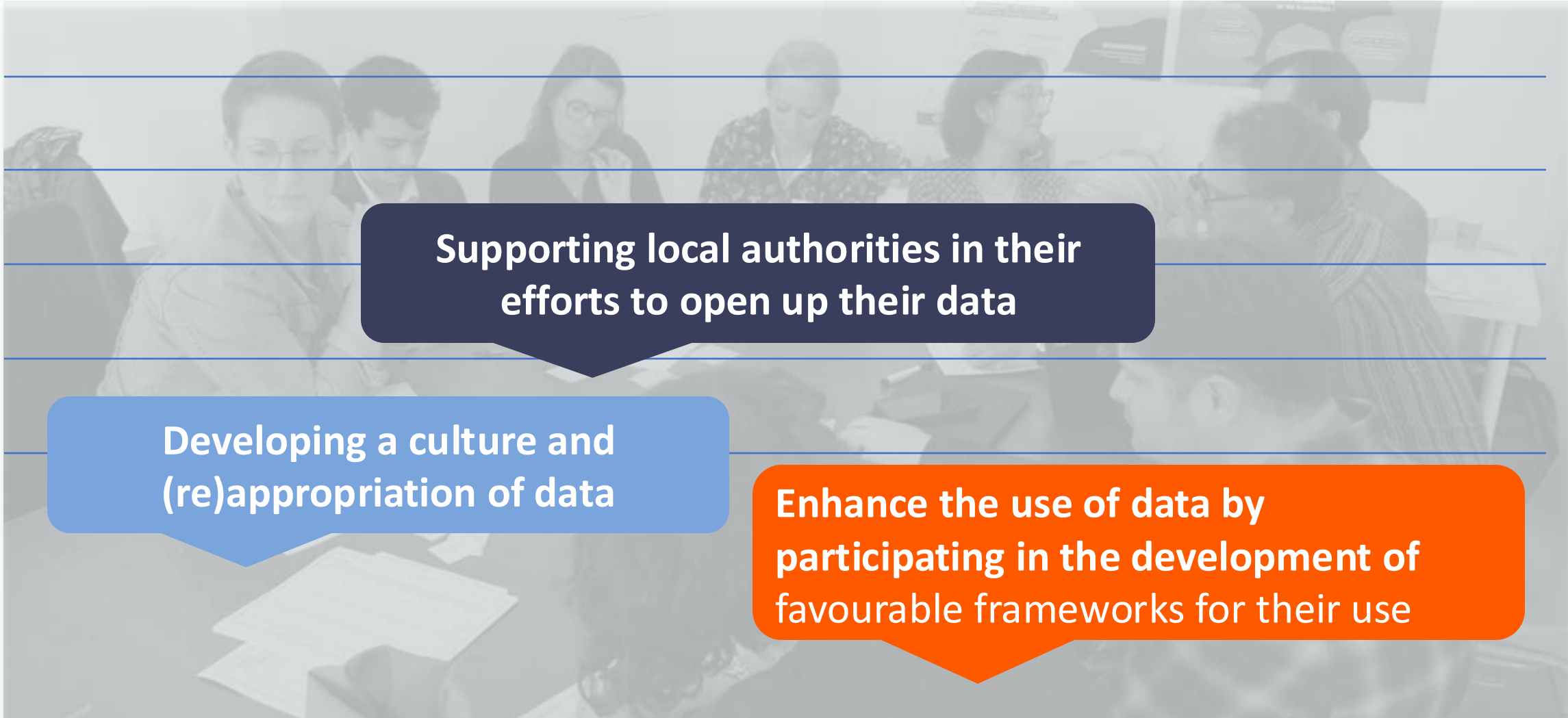
local and regional public players

To jointly develop

access to and use of data

serving the general interest

OpenDataFrance

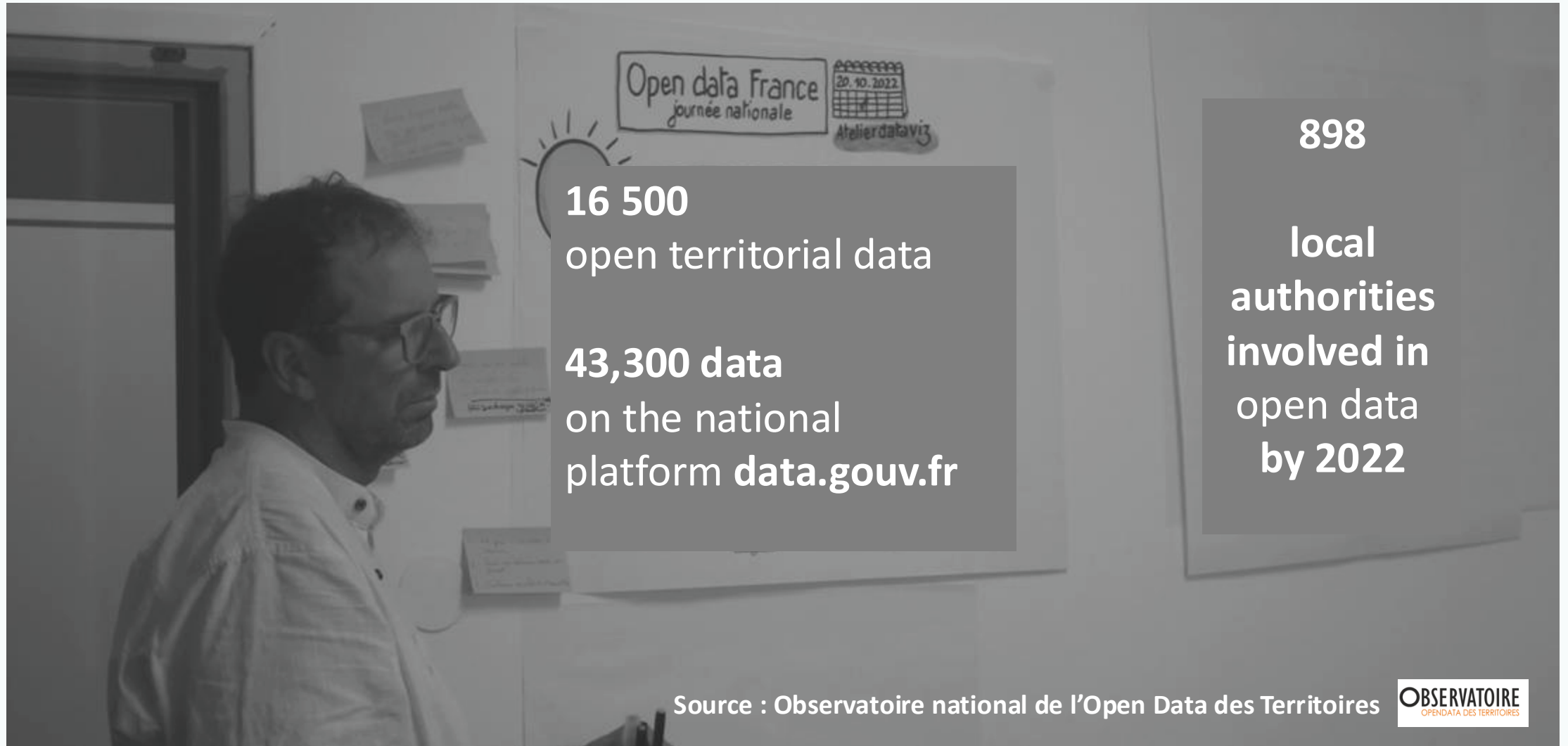


Supporting local authorities in their efforts to open up their data

Developing a culture and (re)appropriation of data

Enhance the use of data by participating in the development of favourable frameworks for their use

Open data en France



16 500

open territorial data

43,300 data

on the national
platform **data.gouv.fr**

898

**local
authorities
involved in
open data
by 2022**

Source : Observatoire national de l'Open Data des Territoires

OBSERVATOIRE
OPENDATA DES TERRITOIRES

Background open data in France

Constitution Article XV de la DDHC 1789

Accountability

CADA – Code 1978

Communicability

European Directives INSPIRE 2000'

Reusability

Law for a Digital Republic 2016

Opening

Data Governance Act Europe 2023

Altruism

Background open data in France

Data is open by default
by local authorities with more than 3,500
inhabitants and 50 employees

Any database produced or received by any
public authority, regularly updated, of
economic, social, health or environmental
interest'
must be open and freely reusable



Challenges of open data

**Guaranteeing
the
transparency of
public action
and encouraging
citizen
involvement**



Image by vectorjuice and pch.vector on Freepik

Challenges of open data

**Guaranteeing
the
transparency of
public action
and encouraging
citizen
involvement**



**Contribute
territorial
development,
digital transition**

**and digital
empowerment**



Image by vectorjuice and pch.vector on Freepik

Challenges of open data

**Guaranteeing
the
transparency
of public
action
and
encouraging
citizen
involvement**



**Contribute
territorial
development,
digital transition
and digital
empowerment**



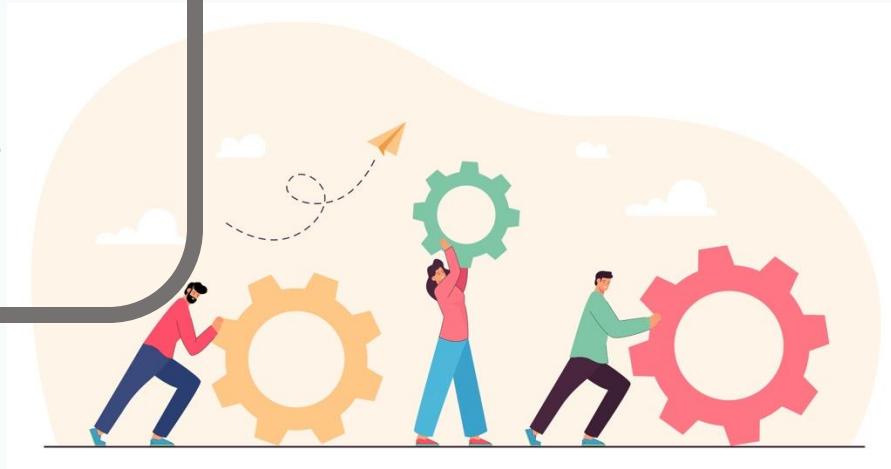
**Promote
innovation
and the creation
environmental,
social, health
economic value**

The challenges of open data for public **s**ervices

**Supply
and reliability
public services**

The challenges of open data for public **s**ervices

**Supply
and reliability
public services**



**Multiplying
information
of information
controlling the
source**

Image by pch.vector on Freepik

The challenges of open data for public **s**ervices

**Supply
and reliability
public services**



**Supporting decision-making
decision-making, steering
of public policies**

**Multiplying
information
of information
controlling the
source**

The challenges of open data for public services

**Supply
and reliability
public services**

**Reclaiming
its data
as a public authority**

**Supporting decision-making
decision-making, steering
of public policies**

**Multiplying
information
of information
controlling the source**



Image by pch.vector on Freepik

Adding value to data



Adding value to data

Improve mobility

Getting around better,
making it easier to use,
making it accessible



Optimise services

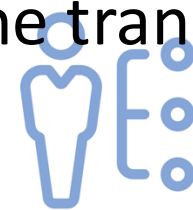
Developing,
supplying and
ensuring the
reliability of
services



Transform

the economic and
environmental
framework

Innovate, emancipate,
create jobs, contribute
to the transition



Adding value to data

moovit, fluo Grand Est, bus, Interreg POCTEFA TRANSFERMUGA-RREKIN, ONLYMOOV Tous vos trajets en temps réel, geovelo, Citymapper, ParkingMap, Handimap LA VILLE ACCESSIBLE À TOUS, TBM TRANSPORTS BORDEAUX MÉTROPOLE, streetco, Navitia.io

transport.data.gouv.fr

Icons: train, bus, car, bicycle, pedestrian

NANTES METROPOLE dans ma poche, mon guichet toodego, My Vizito, Envie de sortir!, Le Monde Élections 2022, 20 Avenue de Ségur 75007 Paris, Cette adresse est située dans la 12^e circonscription de Paris. Trouver sa circonscription en un clic, monservicedechets, Gogowego

adresse.data.gouv.fr, OpenStreetMap

La bonne boîte Pôle emploi, pole-emploi.io Pôle emploi, CityScan, mytraffic, La Maison du Saisonnier, MEL Cadastre solaire de la MEL, Région Grand Est, Surface totale du territoire : 57 705 km2, Population : 5 556 219 habitants en 2019, Millésime 1 : 2018-2019, Millésime 2 : 2007 à 2010, Analyses avancées, Demande de Valeur Foncière, 2018-2019 Depuis 2007-2010, Artificielisé 8.9% 512 306.07 ha +3.75% +18 526.1 ha, Carte des lieux frais, Géo-localisation, namR, KYB Know Your Building, Transition écologique de son parc immobilier, Insee

Local open data initiatives

Adding value to data



Adding value to the transition

Controlling food waste
Open data
and artificial
intelligence
at the service
public
policies



MAGALI : MAITRÎSE DU GASPILLAGE ALIMENTAIRE

PROJET PASSÉ

ÉVALUER L'INTÉRÊT D'UN ALGORITHME CAPABLE DE PRÉDIRE LE NOMBRE DE CONVIVES DANS UNE CANTINE SCOLAIRE PLUSIEURS SEMAINES À L'AVANCE.

PARTENAIRES
MÉTROPOLE DE LYON



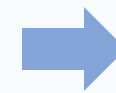
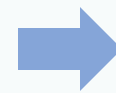
verteego



TŌULOUSE
MAIRIE - MÉTROPOLE

MÉTROPOLE
GRAND LYON

1 rate of food overproduction
= 10%



Application of the algorithm
= - 3 points

Successful open data projects and use cases

See the study:

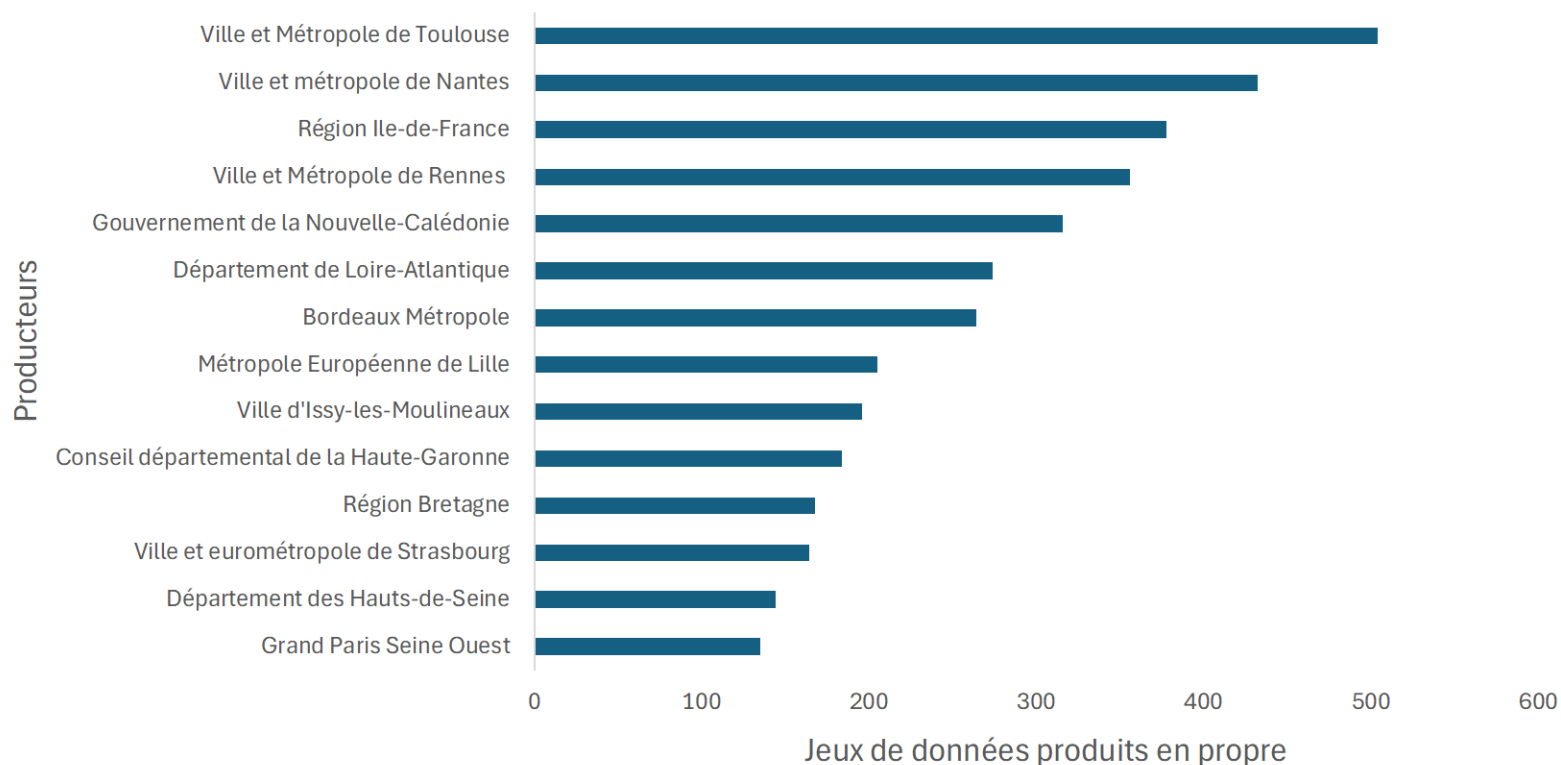
<https://observatoire.data-publica.eu/>

A look at Open Data in local authorities

A study by the Data Publica Observatory in partnership with Opendatasoft (end 2023)

Qui sont les plus gros producteurs de données ?

JEUX DE DONNÉES PRODUITS EN PROPRE PAR PRODUCTEUR



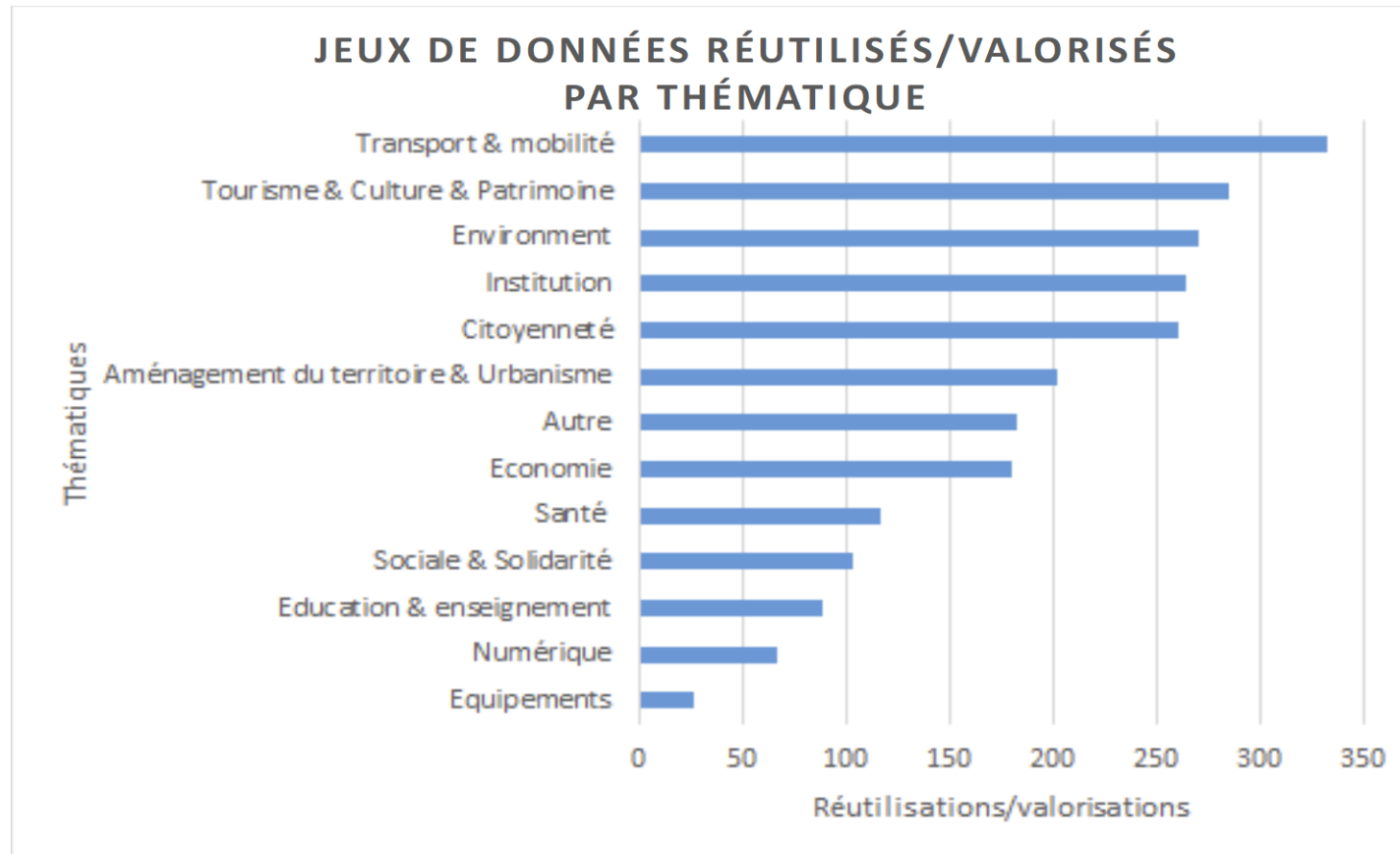
Au sein de notre échantillon de plateformes de collectivités les trois principaux producteurs de données en propre sont :

- ☐ Ville et Métropole de Toulouse
- ☐ Ville et Métropole de Nantes
- ☐ Région Ile-de-France

Les réutilisations par les collectivités

Les premiers réutilisateurs des données sont... les collectivités elles-mêmes !

En effet, à partir des données qu'elles ouvrent et mettent en ligne, elles produisent de nombreuses datavisualisations, cartes interactives, graphiques et outils d'analyse. Certains y verront un dévoiement de l'open data qui devient « communication », d'autres au contraire salueront le travail d'accessibilité accompli. Mais dans tous les cas de figure, le jeu de données brutes est accessible.



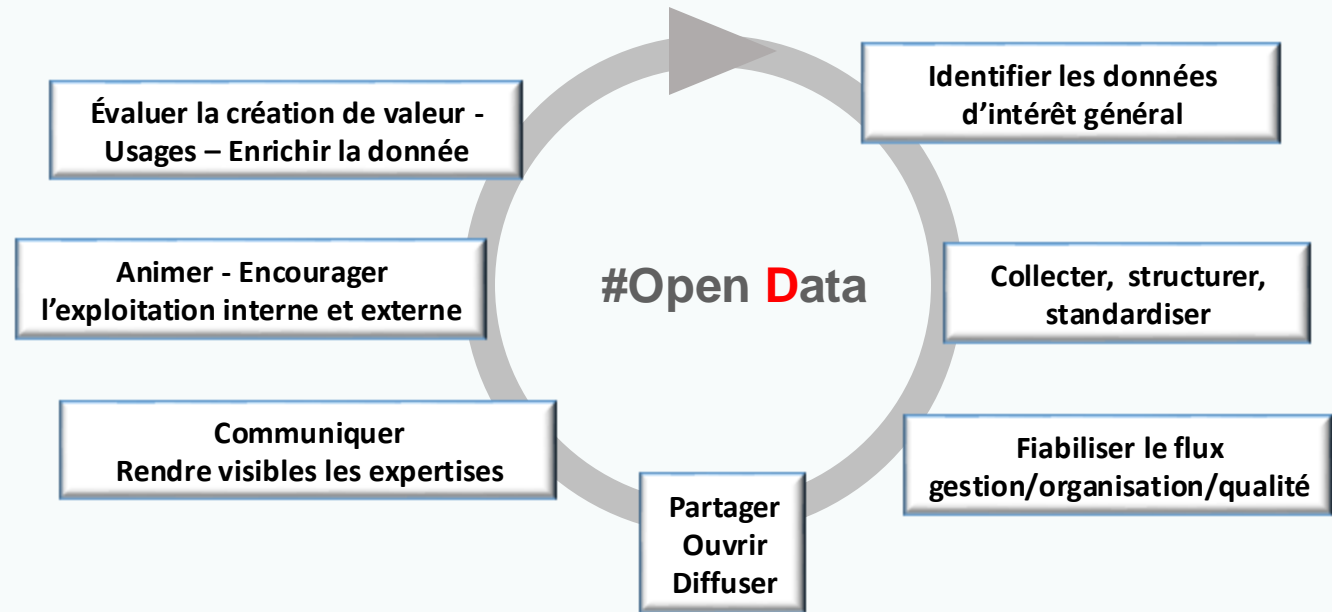
What we do

In addition, the association is involved in the movement to create 'digital commons. Examples of **local authority initiatives** in favour of the commons.

- Raise awareness, educate and train all audiences.
- Federating, coordinating and networking.
- Mobilising data to support the environmental transition.
- Standardise and develop the interoperability and quality of data.
- Enhancing the value of data, making better use of it and increasing its impact in support of public action.
- Representing local and regional public players in local, national and European bodies.

OpenDataFrance – Partenarships with central government agencies





Gabriela Martin
Association OpenDataFrance
Directrice
gabriela.martin@opendatafrance.email

www.opendatafrance.net



CC-by-sa – Mise à jour : Juillet 2024- OpenDataFrance