



Communities are shaping demographic change

Aging populations and a decline in the number of inhabitants are just two consequences of demographic change that are presenting communities and regions with major challenges. Anyone who wants to shape the future proactively and, above all, successfully must begin developing strategic action plans now.

The Community Roadmap online platform offers comprehensive assistance to all of Germany's cities and towns with a population of at least 5,000 inhabitants. It serves as an effective information and early-warning system that supports individuals and organizations at the local level in understanding demographic change and ensuring their community developing in a way that reflects the public's needs. In addition to current data and forecasts of demographic and socioeconomic trends, the Community Roadmap contains practical action plans for use on site. It is freely accessible online, 24 hours a day. If you are a policy maker, public administrator, representative of a community organization, journalist or simply a member of the public, the Community Roadmap offers a wealth of information on what is happening where you live.

Community Roadmap on the go



You can also use our free Demography Roadmap app to learn about the developments affecting your city or town. Selected data on population trends, available as infographics, provide a detailed overview. The app allows you to find out more about the situation in your community quickly and easily, wherever you happen to be.



Android



iOS



Smart Country – Ensuring Participation for All

Demographic change, globalization, digitization and growing social divisions are trends that pose major challenges for individual communities and for German society as a whole. The differences between urban and rural areas and between regions are increasing – contrary to the principle of equal living conditions that is enshrined in the country's constitution.



The increasing digitization of daily life can magnify these differences. At the same time, it also offers disadvantaged regions valuable opportunities for ensuring social participation and for restructuring public services. This applies to a number of areas in particular: Work & the Economy, Health & Care,

Policy & Public Administration, Mobility & Logistics, Learning & Information. We make information on these topics available on an ongoing basis at: <http://www.bertelsmann-stiftung.de/en/our-projects/smart-country/>

Join the conversation:
<https://twitter.com/@SmartCountryDE>

Data and forecasts at a glance



STATISTICS

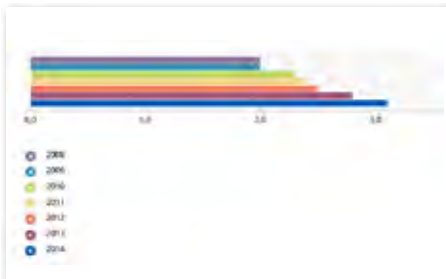
Demographic change is affecting each community in unique ways, often accelerating trends in multiple areas. A broad range of data is now available on every German city or town with a population of 5,000 inhabitants or more. Interactive tools also make it possible to select the content you are interested in and depict it as easily comprehensible maps and graphics.

www.wegweiser-kommune.de/statistik

You have access to:

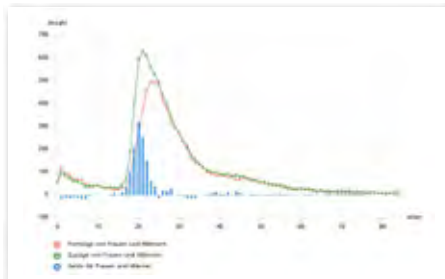
Local-level data

Multifaceted data on issues related to demographic change, education, financial resources, integration and social climate; time series available for recent years until 2014



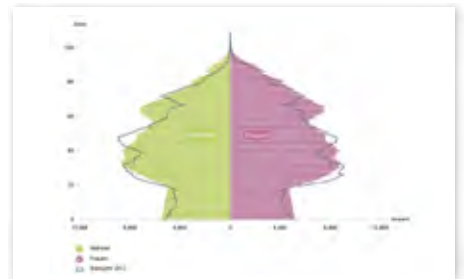
Migration graphics

Information on the number of people moving into or out of each city or town, including the resulting net change in population by age group (yearly cohorts)



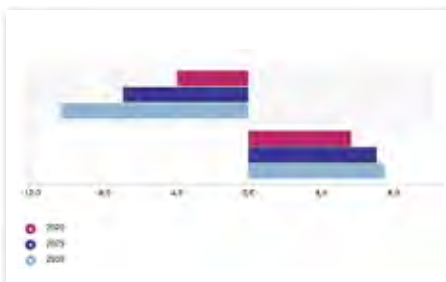
Population pyramids

Depictions of step-by-step changes in age structures, overall and by gender, in the selected community until the year 2030



Population forecasts until 2030

Information from population forecasts until 2030 for cities, towns and rural districts, including number of inhabitants and age structure (e.g. overall structure and 10 key age groups)



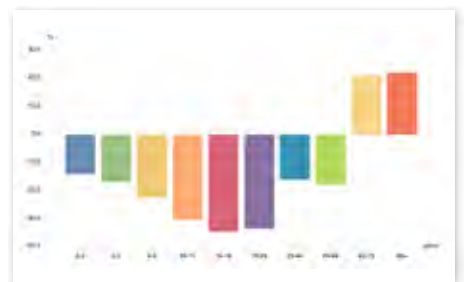
Nursing-care forecasts

Data on future nursing care requirements at the district level, including changes in the number of persons needing care by type of care, and changes in the number of caregivers, until 2030



Age-structure graphics

Young and old: the graphics depict relative population trends until 2030 for 10 different age groups



Helping your community respond



TOPICS

Demographic change is having an impact on all areas of community life. Here you will find action plans, studies and other practice-related information grouped by topic – tools which allow your community to respond to its unique challenges and which can be combined with the comprehensive data and examples of good practice also available in the Community Roadmap.

www.wegweiser-kommune.de/themen

Demographic Change

Demographic shifts are affecting each community differently, with population increases and declines often taking place in close proximity to each other. Aging and migration are constantly altering population structures. Whether it's a matter of infrastructure, policies for families and seniors, or inter-community cooperation, communities must take an interdisciplinary approach when responding to the issues they face.



Education

Education takes place locally: in preschools and schools, as vocational and career training. Individuals and organizations are getting involved to improve educational opportunities at the local level. Studies and recommended action plans in the areas of early childhood education, primary and secondary education, vocational training and continuing education provide guidance on effective strategies and success factors.



Financial Resources

Communities take action based on their budgets. Common budgeting issues include intergenerational justice, effective methods of providing services and achieving policy goals, and fiscal consolidation. Transparent, easy-to-compare financial data, policy recommendations and examples of good practice can help your community identify possibilities for improvement and development.



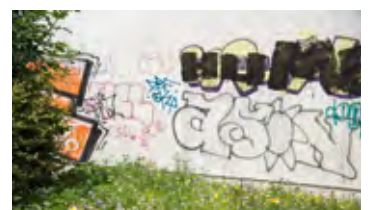
Integration

Helping immigrants integrate is a key challenge for communities today. For integration to succeed, newcomers must have access to viable opportunities and must feel at home in society. Successful integration policies must be based on a community-wide strategy which takes numerous issues into account, such as education, health care and employment, and which includes effective approaches to engaging with immigrants and making them feel welcome.



Social Climate

Employment, housing and quality of life are critical factors determining the social climate in your city. Participation, poverty and social segregation are some of the issues communities can address to improve the conditions people experience in their daily lives.



Community Reports



TOPICS

Let us help you increase transparency on the issues determining your community's future. The Community Roadmap allows you to produce data reports on a range of topics and include them in your strategic planning. The reports also make it possible for you to develop your own reporting system on topics relevant to your community. Downloads are available as PDFs, making it easy to include the desired information in your system.

You can choose between information on demographics, education, integration and social affairs, and compare your city or town with other communities or the state as a whole.



www.wegweiser-kommune.de/kommunale-berichte

Good Practices in Communities



PROJECTS

Communities can respond effectively to the challenges they are experiencing. All that's required is creativity and commitment, as many cities and towns have shown. To help you take the next step, the projects presented here focus on practical implementation: all

of the ideas, strategies and approaches have already been field tested and carried out at the local level, demonstrating that the challenges communities face are also opportunities. Take a look and let yourself be inspired by these innovative solutions!

www.wegweiser-kommune.de/projekte

Topics

Brief descriptions are available of over 230 projects, providing inspiration for other communities. Our five main topics – demographic change, education, budgets, integration and social climate – are grouped according to numerous subtopics, from digitization, nursing care, language skills, debt levels and early childhood interventions to possibilities for making newcomers feel welcome. In addition to classification by topic, these practical examples can also be filtered by geographical location and other criteria.

Learning from others

Demographic developments do not stop at national borders, which is why projects taking place outside of Germany are also included.

And perhaps you, too, know of an exemplary project? If so, please feel free to contact us at:

www.wegweiser-kommune.de/projekt-vorstellen

Community Roadmap blog

The Bertelsmann Stiftung's experts use our blog to describe and discuss the various aspects, impacts and developments related to demographic change. After all, when you look behind the many facts and figures what you find are ideas, stories and personal experiences. We want to explore the many factors together with you. We therefore invite you to join our blog commu-

nity and discuss demographic change with specialists, policy makers and the interested public. We would love to hear your questions, ideas and opinions.

Ready for the future: additional information on demographic change at the community level is available at:

DIRECTOR „LIVABLE COMMUNITY“



Dr. Kirsten Witte

kirsten.witte@bertelsmann-stiftung.de

Telephone +49 5241 81-81030

PROJECT TEAM



Hannah Amsbeck

hannah.amsbeck@bertelsmann-stiftung.de

Telephone +49 5241 81- 81280



Petra Beckhoff

petra.beckhoff@bertelsmann-stiftung.de

Telephone 0+49 5241 81- 81336



Carsten Große Starmann

carsten.grosse.starmann@bertelsmann-stiftung.de

Telephone +49 5241 81- 81228



Silke Hansberg

silke.hansberg@bertelsmann-stiftung.de

Telephone +49 5241 81-81257



Petra Klug

petra.klug@Bbertelsmann-stiftung.de

Telephone +49 5241 81- 81347



Jan Knipperts

jan.knipperts@bertelsmann-stiftung.de

Telephone +49 5241 81-81430



Petra Vollmer

petra.vollmer@bertelsmann-stiftung.de

Telephone +49 5241 81-81469



Vanessa Weeke

vanessa.weeke@bertelsmann-stiftung.de

Telephone +49 5241 81- 81311

Bertelsmann Stiftung

Carl-Bertelsmann-Straße 256 | 33311 Gütersloh
www.bertelsmann-stiftung.de/en/



© November 2016 Bertelsmann Stiftung, Gütersloh

Design: Visio Kommunikation GmbH, Bielefeld | **Photos:** Valeska Achenbach (p. 3 – Demographic Change, Education, Financial Resources, Social Climate); Fotostudio Clemens (p. 6 – Petra Beckhoff); Creativemarc – Fotolia.com (p. 4); gstockstudio – Fotolia.com (p. 5); Thomas Kunsch (p. 6 – Petra Vollmer); Veit Mette (p. 3 – Integration); Kai Uwe Oesterhelweg (p. 6 – Jan Knipperts); Jan Voth (Title, p. 6 – Dr. Kirsten Witte, Hannah Amsbeck, Carsten Große Starmann, Silke Hansberg, Petra Klug, Vanessa Weeke) | **Pictograms:** Jinit[AG für digitale Kommunikation, Berlin

www.bertelsmann-stiftung.de/en/